

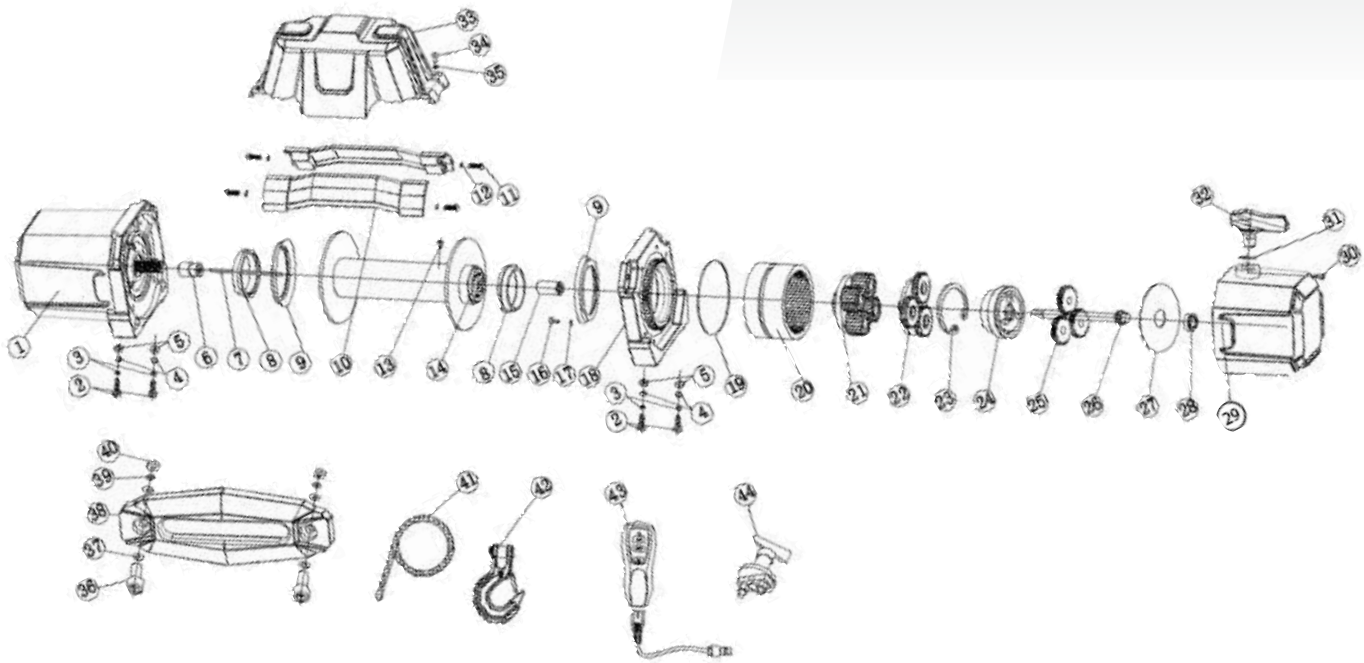


Ref:	Description:	Sku:
1	Contactor	CON012-CAD
2	Complete Control box including, Contactor and Wiring	W800700
3	Motor Assembly	W800100
4	End Bearing	W800016
5	Motor Bracket	CPM80FTA
6	Gearbox	GBT12FTA
7	Clutch Assembly	W800026
8	Tie Bar	W800009
9	Aluminium Fairlead	AHF9500WW
10	Synthetic Rope	W120800
11	Hook	GHK0V2
12	2in1 Transmitter	TTR1224TX
13	Socket	SOCK80FTA

### Accessories List



Winch Cover  
LWC003-CAD



#	Part Number	Description	Qty.
1	W120100	Motor Assembly	1
2	W120001	Cap Screw M10 x 35	4
3	W120002	Lock Washer Φ10	4
4	W120003	Think Flat Washer Φ10	4
5	W120004	Hex Flange Nut M10	4
6	W120005	Coupling	1
7	W120006	Six angle bar	1
8	W120007	Bushing—Drum	2
9	W120008	Ring Seals	2
10	W120009	Tie Bar	2
11	W120010	Lock Washer Φ8	4
12	W120011	Cap Screw M8 x 30	4
13	W120012	Screw M8 x 10	1
14	W120200	Drum Assembly	1
15	W120013	Coupling	1
16	W120014	Screw M5 x18	8
17	W120015	Lock Washer Φ5	8
18	W120016	End Bearing	1
19	W120017	Sealing Strips	1
20	W120018	Gear—Ring	1
21	W120300	Gear Carrier Assembly (Output)	1
22	W120400	Gear Carrier Assembly (Intermediate)	1

#	Part Number	Description	Qty.
23	W120019	Circlip For Hole	1
24	W120500	Break / Shaft Assembly	1
25	W120600	Gear Carrier Assembly (Input)	1
26	W120020	Gear—Input Sun	1
27	W120021	Trust Washer	1
28	W120022	Bearing	1
29	W120023	Gear—Housing	1
30	W120024	Clutch Screw	1
31	W120025	Ring Seals	1
32	W120026	Clutch	1
33	W120700	Control Assembly	1
34	W120027	Screw M5 x12	4
35	W120028	Lock Washer Φ5	4
36	W120029	Cap Screw M12 x 30	2
37	W120030	Think Flat Washer Φ12	4
38	W120031	Aluminium Fairlead	1
39	W120032	Lock Washer Φ12	2
40	W120033	Hex Flange Nut M12	2
41	W120800	Cable Assembly	1
42	W120900	Hook Assembly	1
43	W121000	Wireless Remote Control Switch	1
44	W120034	Battery Switch	1